

Integral soil management in the Port of Rotterdam focus on chlorinated hydrocarbons

Renare Mark Workshop

7 October 2003

Lida Scheiwal-van der Kley

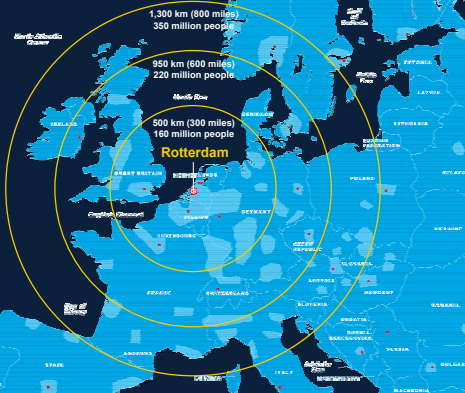


Contents

- ⑦ 1. Facts and figures
- ⑦ 2. Contamination problem in the PoR
- ⑦ 3. Integral management approach
- ⑦ 4. Investigation strategy and techniques
- ⑦ 5. Remediation strategy and techniques
- ⑦ 6. Future plans

2

Rotterdam mainport



3



4

Waal-/Eemhaven

①

Containers
Forest products
Other general cargo

5

Botlek

③

Oil products
Chemicals
Agribulk
Coal
Other dry bulk

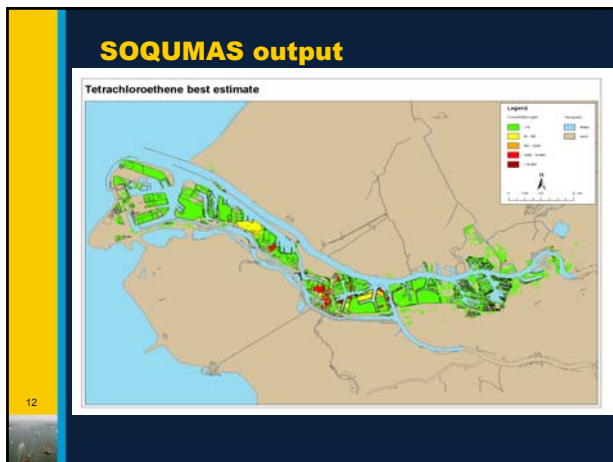
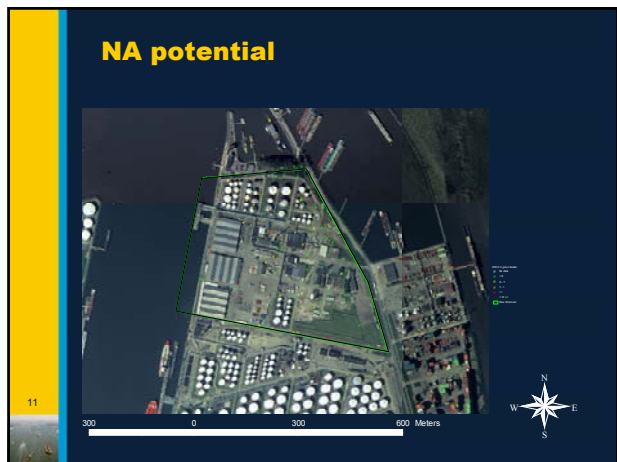
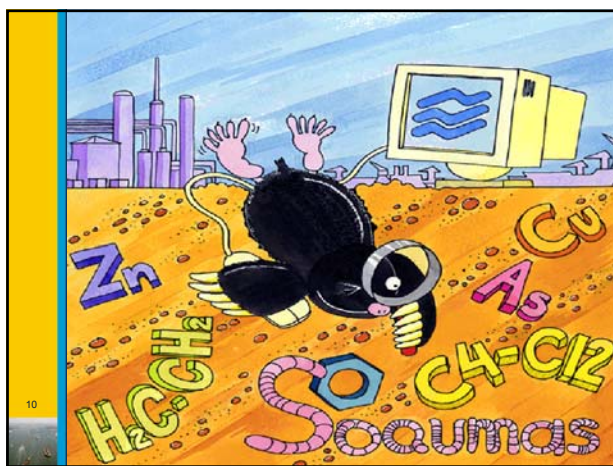
6



Soil quality

- 'We know more about the movement of celestial bodies than about the soil underfoot' (Da Vinci)
- A legacy from the past
- 1000's of hot spots (mainly oil, VOH and CHC)

9



Integral management approach



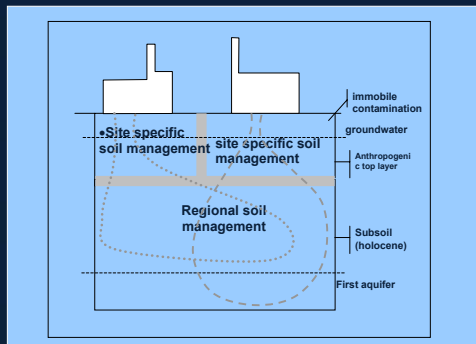
13

Dynamism in the Port of Rotterdam



14

Combined Integral approach: Individual and regional



15

WELCOME

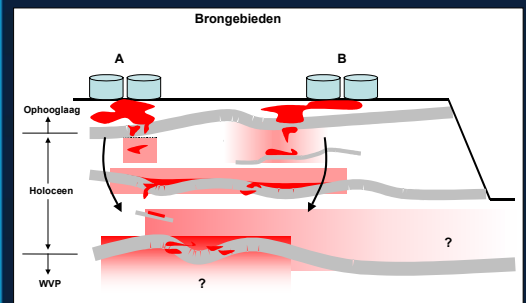
- ⑦ Integral Management System
- ⑦ - Definition of megasite (conceptual model)
- ⑦ - Risk assessment per cluster
- ⑦ - Risk Management scenario's
- ⑦ - Implementation plan

16



17

Source-plume relations



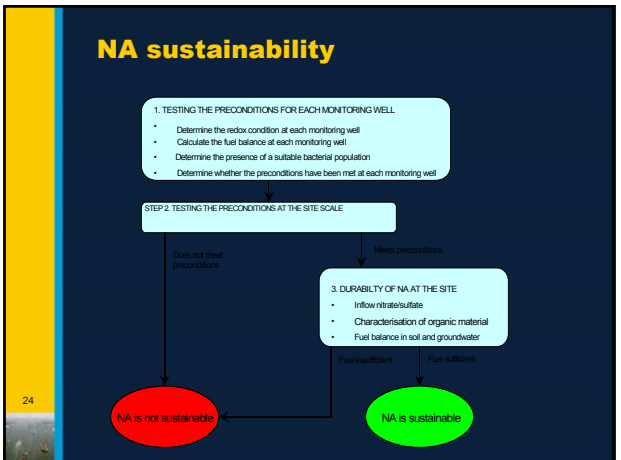
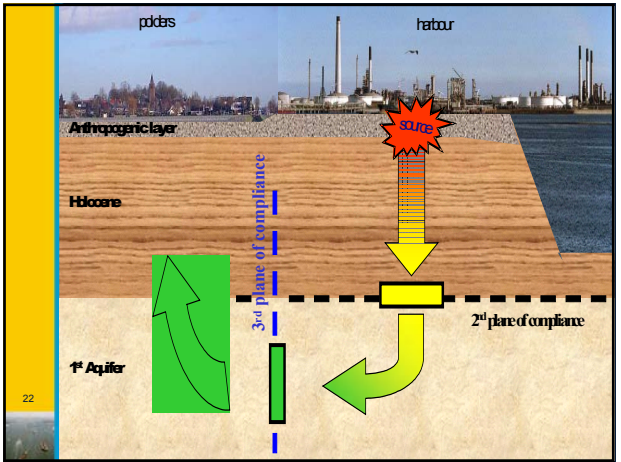
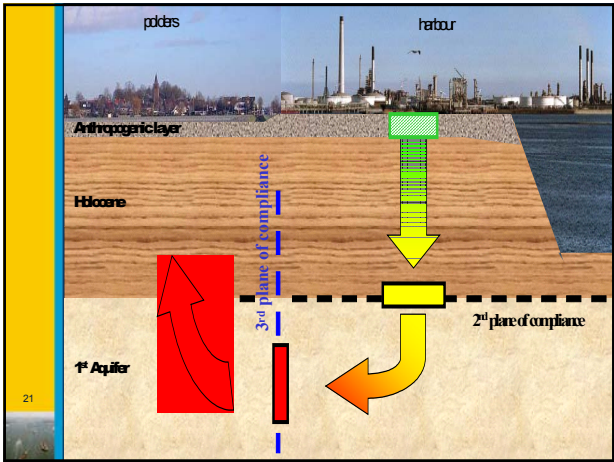
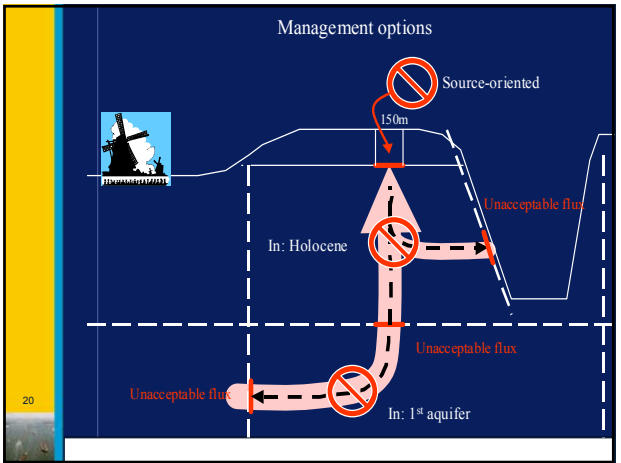
18

19

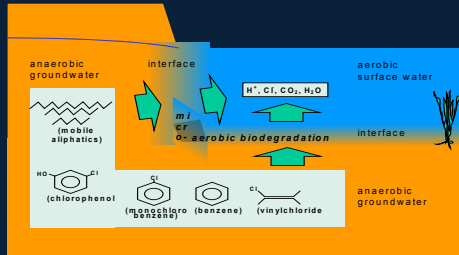


Investigation techniques

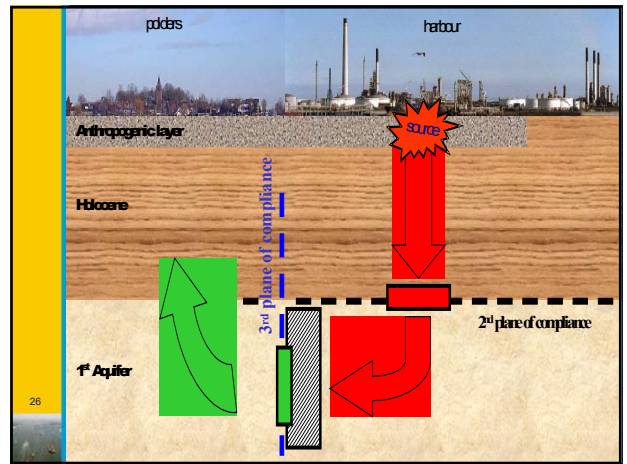




NA-interface



25



26

Future plans for Soil Management in the Port of Rotterdam

- ⑦ Soil Management organisation
- ⑦ Integral approach
- ⑦ Co-operation with stakeholders



27