

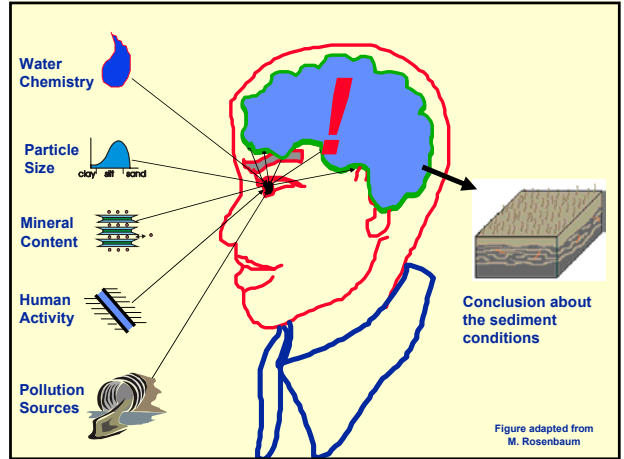
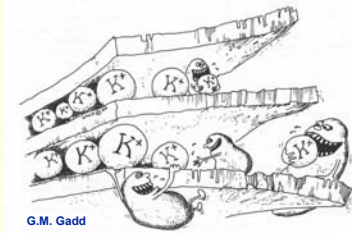
What do you mean by bioavailability ?

- My sediments, exactly!

Rodney Stevens & Laila Johannesson

Department of Earth Sciences
Göteborg University

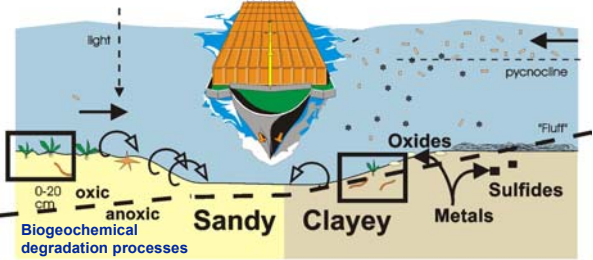
- Needs and risks in standardisation
- Site specificity
- Process relationships
- Database optimisation



DG VII
Transport

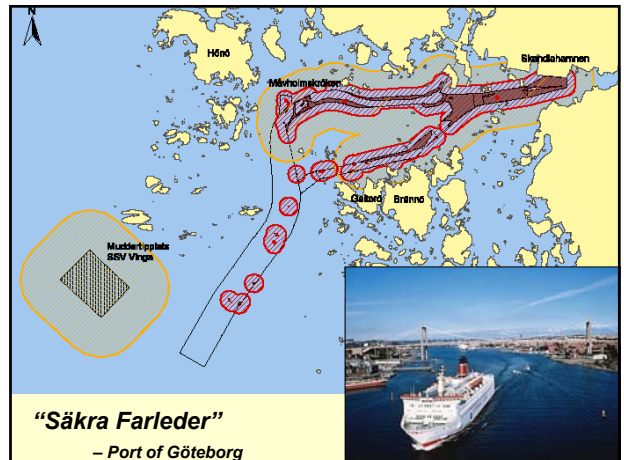
H-SENSE

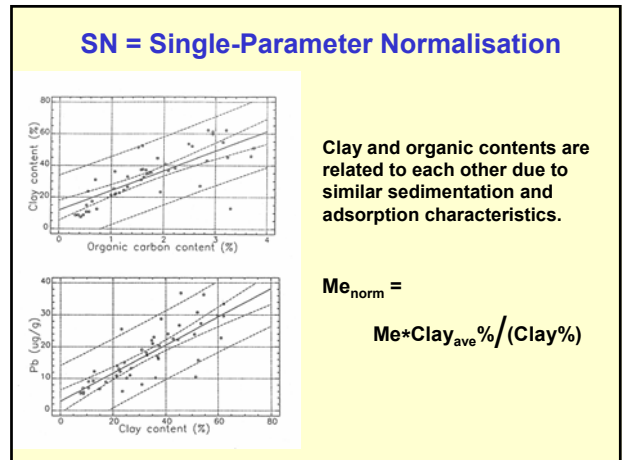
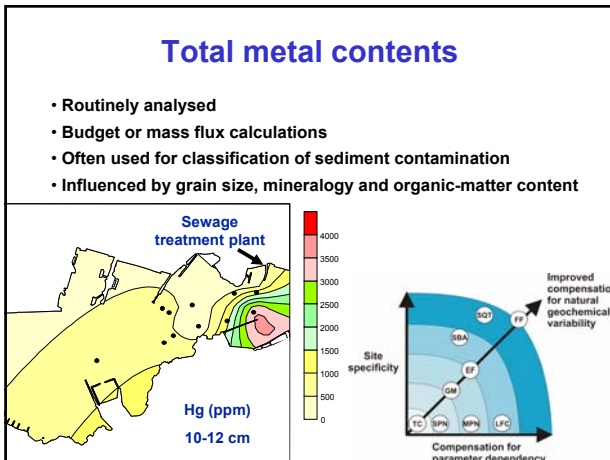
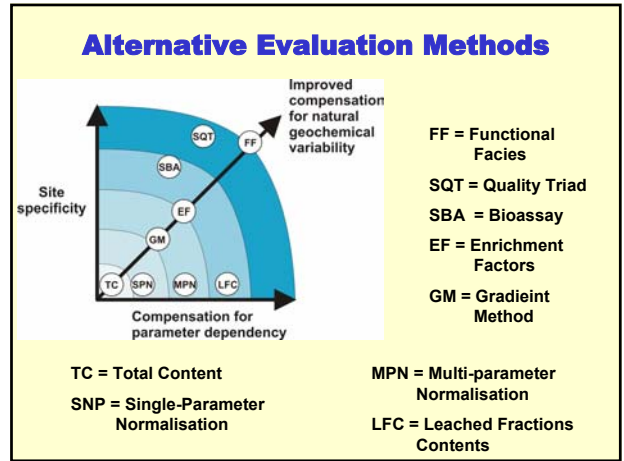
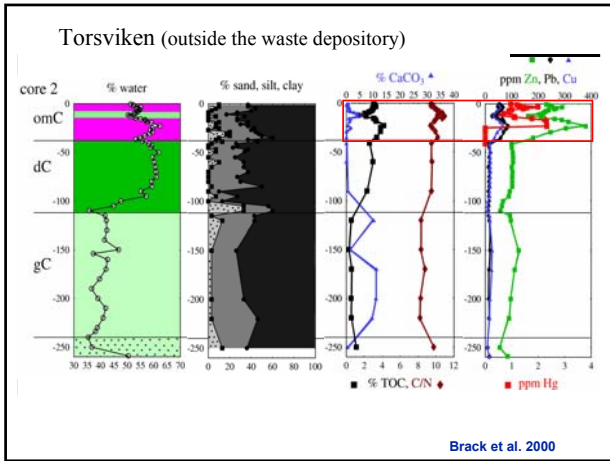
Harbours - Silting and Environmental Sedimentology

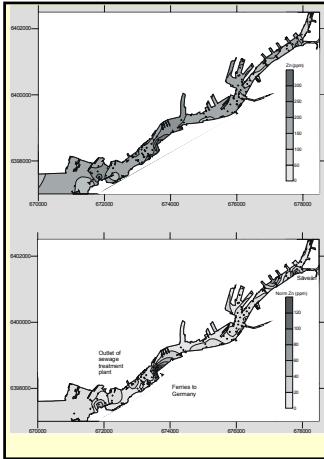


= Functional Facies

<http://hjs.geol.uib.no/hsense/> Env. Geol. 43:4 (2003)

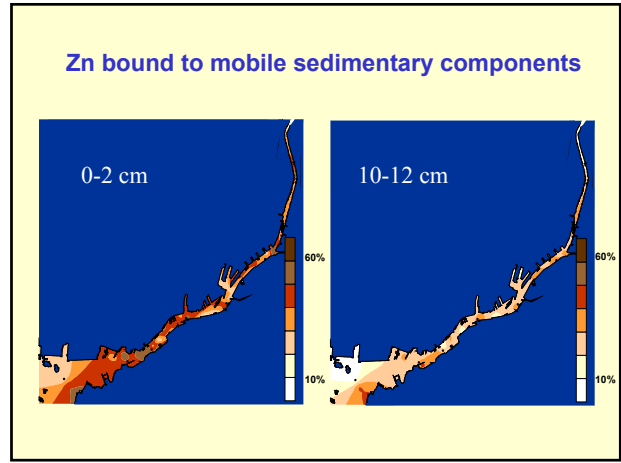
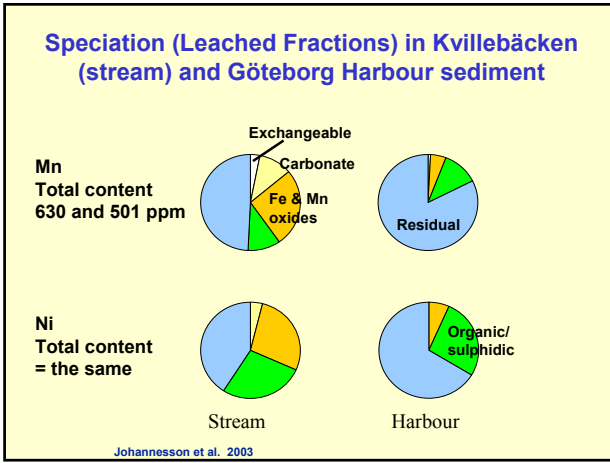
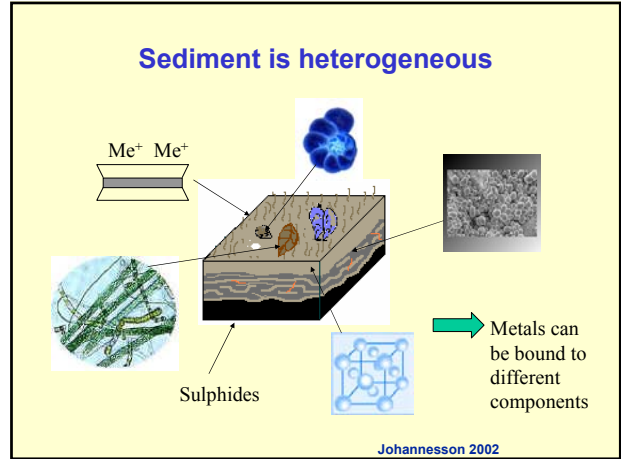
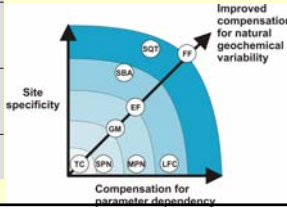


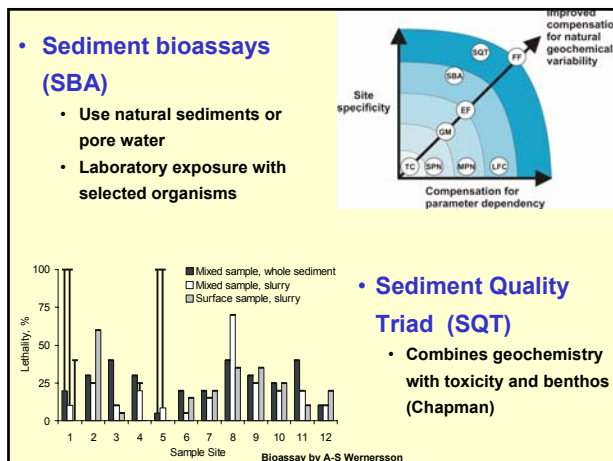
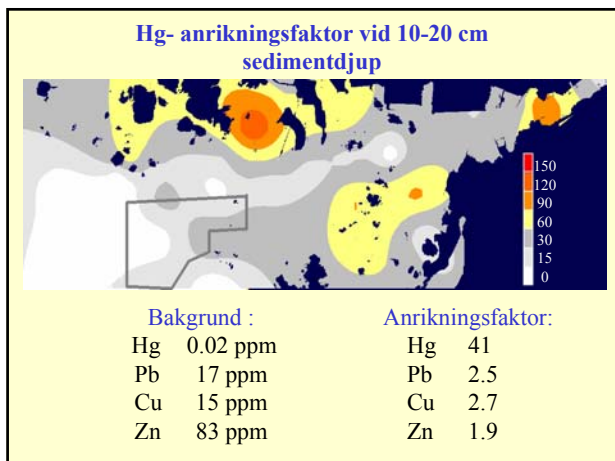
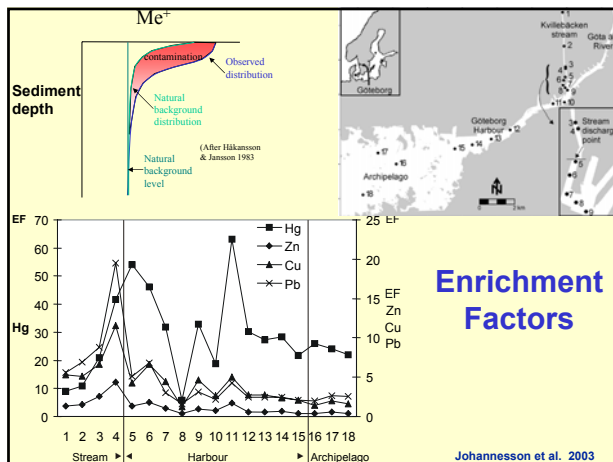
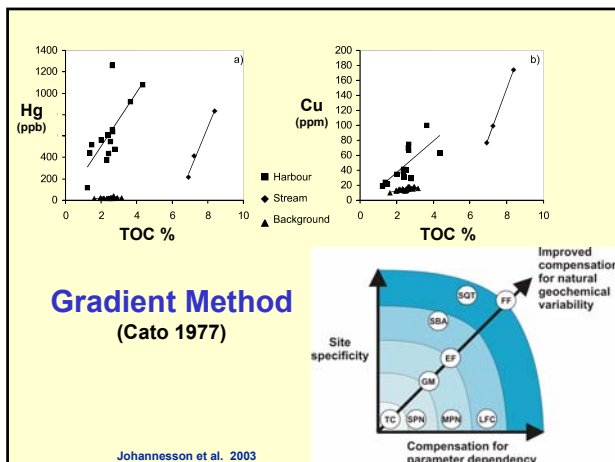




Multiparameter normalisation

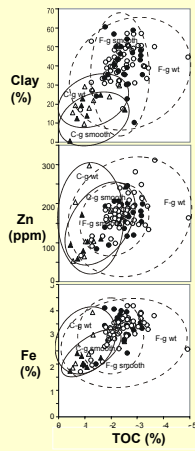
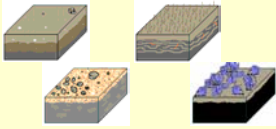
$$Zn^* = 156.6 + 21.8(TOC) - 1.1(<16 \mu m) - 0.4(Mn) + 76.4(Fe)$$



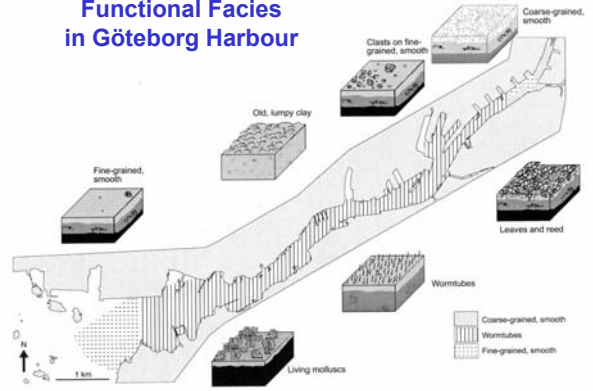


Functional Facies

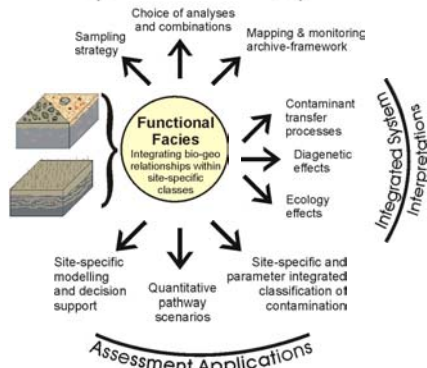
- Integrate physical, geochemical and biological relationships
- Guideline in sampling, analyses & interpretation



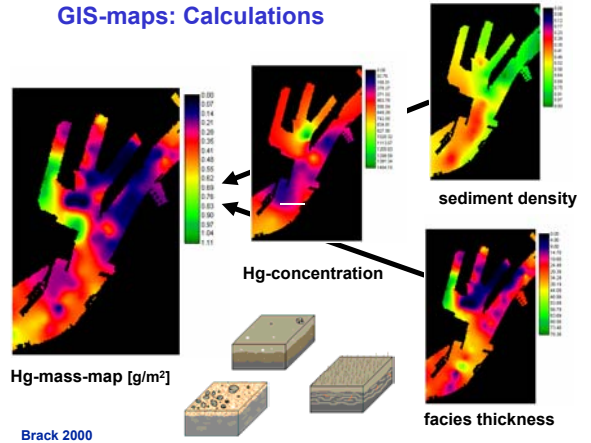
Functional Facies in Göteborg Harbour



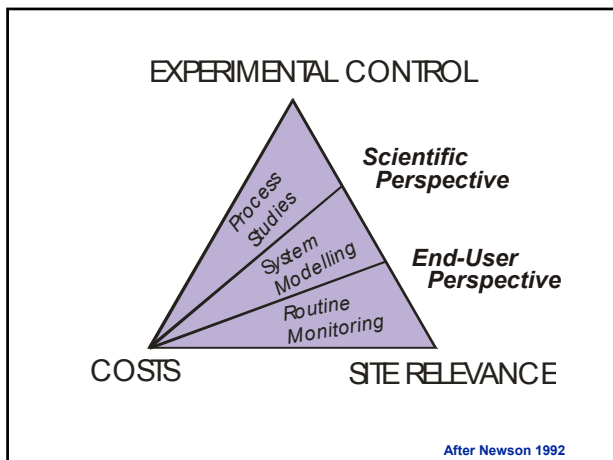
Monitoring Optimisation



GIS-maps: Calculations



Brack 2000



- ## Conclusions
- **Standardisation** should not be the same as generalisation.
 - **Site-specific evaluation** usually requires considerable documentation in addition to total geochemistry due to sediment parameter dependencies.
 - **Bioassay** results are also dependent on site-specific processes that can change sediment toxicity.
 - **Databases** should be multi-functional, including as much primary data as possible for future flexibility.
 - **Functional facies** (or similar classifications) can aid database structure and guide evaluation choices.

Tack!

A “quiet” pilsner in Göteborg

- Need for comparability
- Risks (site specificity)
 - Resuse
- Process relationships
 - Classification needs
 - No new – numerous application of classification in all disciplines