

A Methodology to Prioritize Remediation Technologies

Jaana Sorvari
Finnish Environment Institute



PIRRE -project "Eco-efficient risk management of contaminated soil and groundwater"

RECOURCES



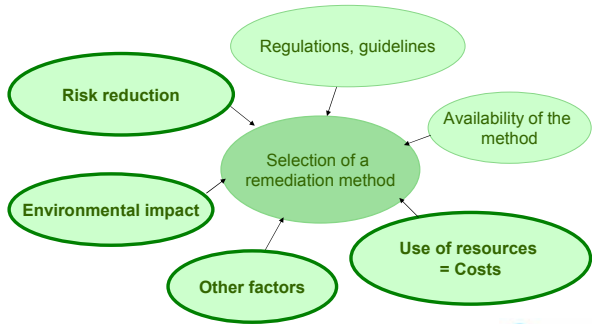
BENEFITS

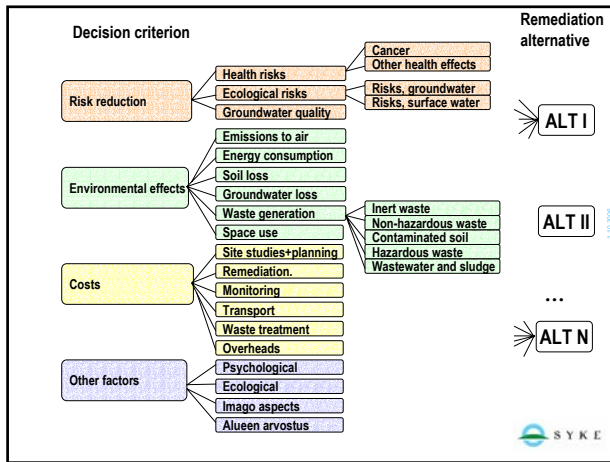
Eco-efficiency = "more with less"





Selection of a remediation method – decision criteria





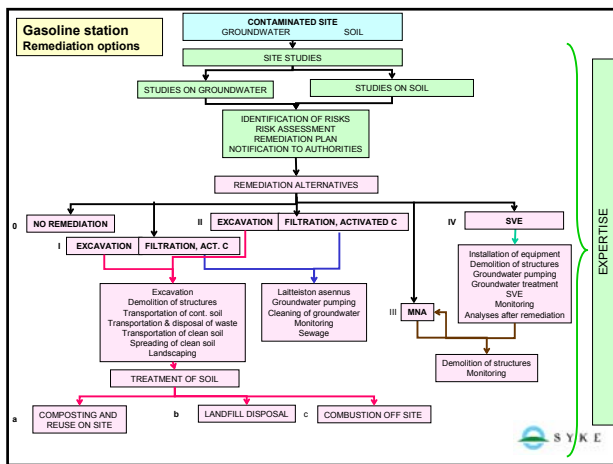
Testing of the PIRRE tool

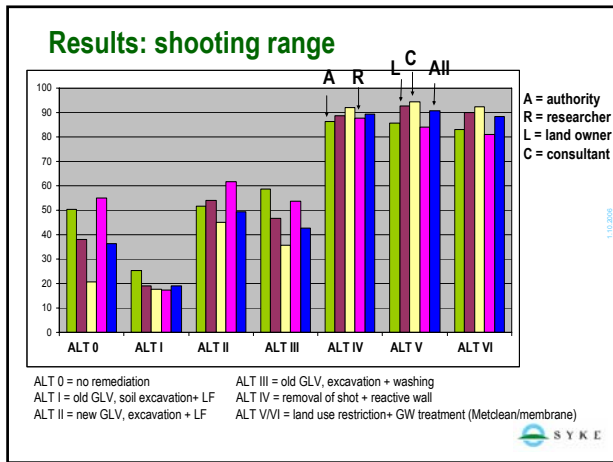
Two sites

- Shooting range
- Gasoline station

→ Creation of site data and remediation options

→ → Valuation of the decision criteria by different stakeholders





Difficulties arise...

- The valuation process has to be explained thoroughly
- The weights have to be defined site-by-site!
- Comparison of non-coordinate factors is difficult (e.g., amount of waste generated vs. space use)

SYKE

WHY TO BOTHER ?!

1/2

Firstly,

- To identify major factors of decision making (different stakeholders)
- To identify critical data gaps
- focusing resources
- savings

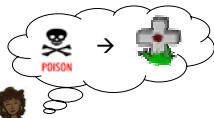


WHY TO BOTHER ?!

2/2

And above all,

...the 95th percentile risk estimate...
...jargon jargon...



...to facilitate **communication** !



Home page:

www.environment.fi/syke/pirre



THANK YOU !