



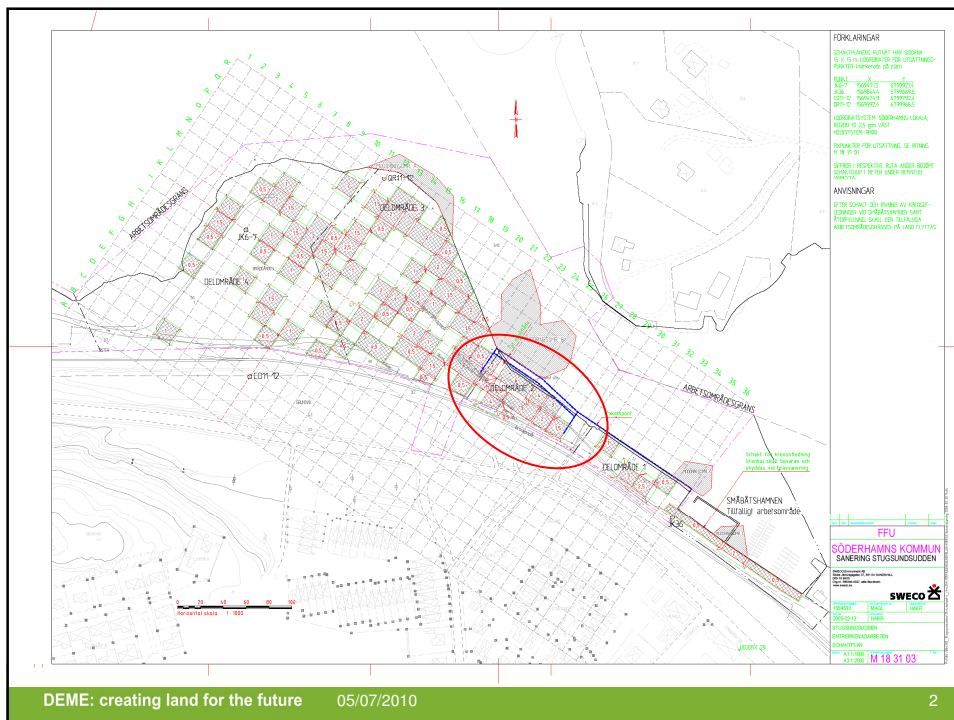
DEC

Environmental Contractor

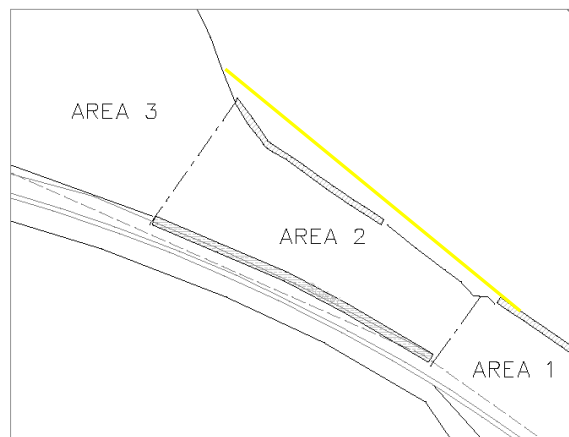
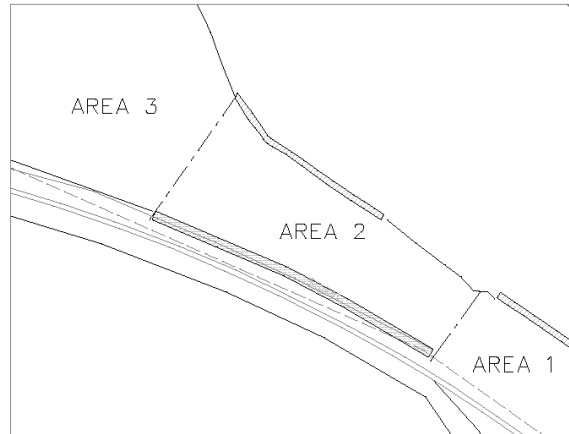
Remediation Stugsundsudden Söderhamn

DEME: creating land for the future

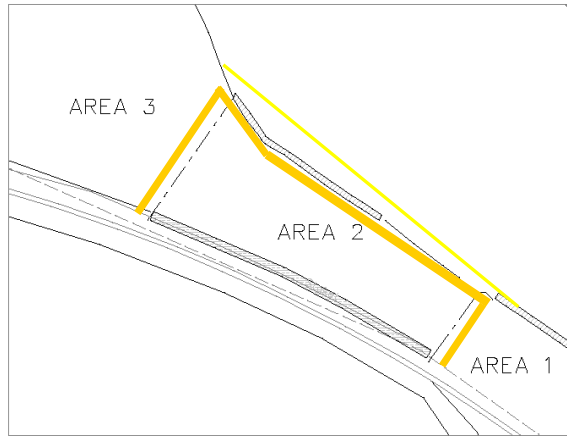
Member of the DEME Group



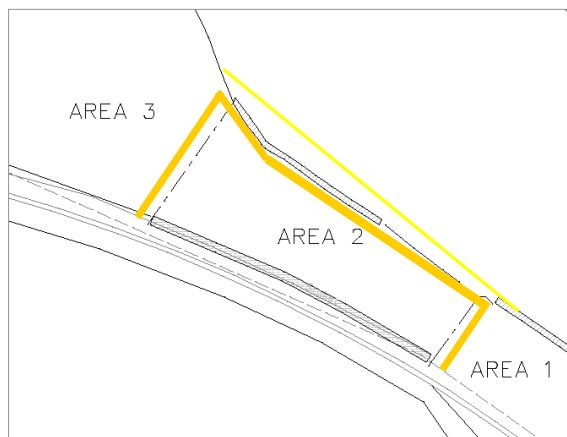
Remediation of area 2



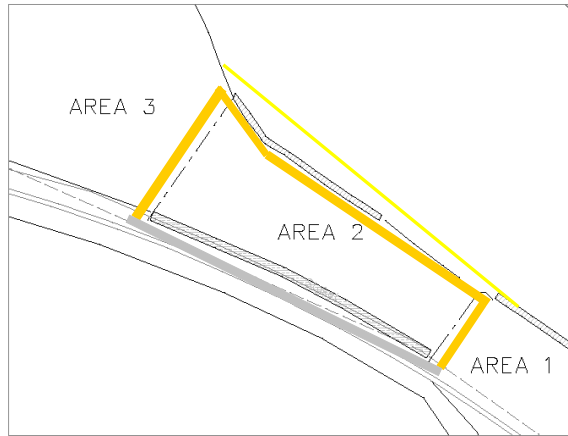
Installation of a silt screen



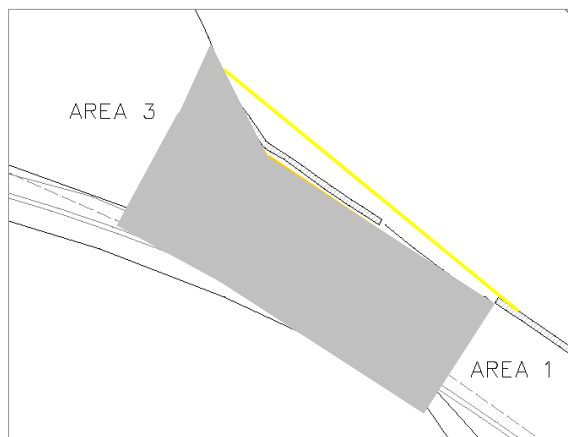
Installation of a reactive barrier



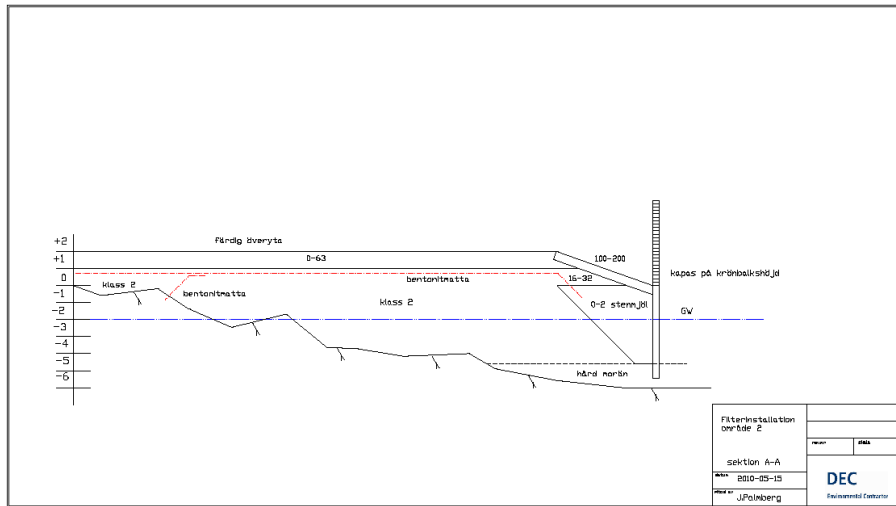
Excavation and backfill of area 2



Installation of a bentonite wall



Installation of a bentonite mats



DEC
Environmental Contractor

Remediation of area 2

- Reactive barrier:
 - Mixture of sand/activated carbon/ Fedec
 - Sand: act as a filter
 - Activated carbon/Fedec: active component in the filter
- Bentonite mats and wall:
 - Prevent/limit the inflow of water